

Points of Interest:

- The Sign Capricorn
- Astrological Keywords
- Birth Chart Analysis
- Tarot Spread Example
- Membership Room
- Stellanian Honor Guard
3rd Quarter 2012

Inside this issue :

Astrology: Capricorn	1
Capricorn Insights	1
Stellanian HG	2
Editorial	3
Dominant Capricorn:	5
Archetypes:	9
Tarot Correspondence	10
Tarot Sample Spread	11
Conference 2013	13
Membership Room	16
Vision Statement	20

Quarterly



Volume 88 Issue 1

Winter 2012—2013

Astrology — Capricorn

By Christopher Gibson

Capricorn, Latin for Horned-Goat, is the tenth sign of the zodiac. The opposing constellations of Capricorn and Cancer both bear the distinction of being the smallest and faintest of the zodiacal signs. The brightest star in Capricorn has only a 3.6. magnitude. The constellation of Capricorn is best viewed in September, where it is surrounded by the constellations of Aquila, Sagittarius,

Pisces Austrinus, and Aquarius. Located in the southern celestial hemisphere, Capricorn is in a region called the Sea, thus many of the closely constellations reveal an aquatic theme. Since the middle Bronze Age, Capricorn has been commonly depicted as a mythical sea-goat, with the curling tail of a fish and the front quarters of a male goat.

In Classical mythology Capricorn has been identified with



Capricorn, Leiden Aratea, c. 816

two key figures: Amalthea and Pan. Amalthea, meaning tender goddess, suckled the infant Zeus in a cave on Mount Aigaion in Crete. Having been forewarned that

(Continued on page 4)

Capricorn Insights — Making Good Use of the Present

By Meg Dissinger

“Every environment offers opportunities for Spiritual advancement, and one who makes good use of present circumstances for spiritual ends will attract new opportunities.”

Spiritual Astrology—C. C. Zain

Truth be told, right now I am hanging on to those words written above. The crux of this article comes to you from a sermon presented at Church of Light Headquarters in December of 2006; however, my heart right now is stuck here in northern New Mexico as I face the death of my amazing and wonderful brother. In so many ways,

he set me firmly upon the spiritual path that brought me to the Religion of the Stars. I cannot fathom a world in which he is not the formidable presence that I do so love and admire. So I offer this piece to him. I think you’ll know when I am straying from the original text, which was too short for this publication anyway, since we originally were doing a Solstice Service along with the Sunday message. Losing a sibling is a new journey for me. I don’t like it a bit, but if the above saying is correct, and I believe it to be true, then I must know that this experience is

(Continued on page 8)

Stellarian Honor Guard

For the period between July 1 and September 30, 2012

Regular Contributors form the solid foundation from which The Church of Light can grow. This column honors those who financially support the work of spreading the Religion of the Stars. Guardian Angels contribute more than \$500 in a quarter. The Stellarian Honor Guard includes those who contribute between \$100 and \$500 per quarter. We are grateful for your generous contributions to The Church of Light.



Guardian Angels

Anonymous
 Donald & Barbara Baker
 Paul & Vicki Brewer
 Adriana Donofrio
 Margaret Joscher
 Alice Marie O'Neil
 Pat Aeronautics
 Patrick & Radine Ramsey
 Roland & Dorothy Wissler

Stellarian Honor Guard

Anonymous
 Patricia Beard
 Keith Benjamin
 Deborah Bevard
 Joya Bowden
 Barrington Bowen
 David S. Braumann
 Neil & Norma Cantwell
 Steve & Bessie Carrothers

Meg Dissinger
 Leonard P. Fletcher
 Christopher Gibson
 Gale Gorman
 Bob & Shirley Hall
 Douglas Heimbichner
 Johanna & Gerald Howard
 Barbara Kniffen
 Shane H. Koch
 Francis M. Makinde
 Dean McArthur
 Wendy Rook
 Michele Roumell
 Sylvia Setzler
 James A. Targett
 Peter Tourian
 Robbie Vaughn
 Timothy Wycislak

Regular Contributors

Anonymous

Victor Battaglia
 Erika Casuse
 Claudia Clark
 M. Evans
 Tiniqua Frizzell
 Margaret Garofano
 Thomas Higgins
 Joseph David Hill
 K. Paul Johnson
 Robert Jesse Lusignan
 Gladys S. Marks
 Allyn McCray
 Michelle Berry Robins
 Paula Rubery
 Mikael Salter
 Christopher Sutherland
 Patricia Tatro
 Marianne Thalken
 Joan Titsworth Marsteller
 Fern Tucker
 Gibran Zeher

Winter Issue 2012-2013

ISSN: 009-6520

Vol. 88, No. 1

PUBLISHED BY
The Church of Light

EDITOR
Christopher Gibson

PRODUCTION MANAGER
Barb Kniffen

COPY EDITOR
Lara Hill
Radine Ramsey

The Church of Light Quarterly is the official publication of the Church of Light. It includes educational and inspirational supplements to The Brotherhood of Light Lessons.

There are four issues per year: Winter, Spring, Summer and Fall.

Directors:

Paul Brewer, President, NM
Margaret Joscher, VP, CA
Vicki Brewer, Secretary, NM
Dave Carrothers, Treasurer, NV
Donald Baker, NY
Christopher Gibson, NM
Patrick Ramsey, NM

Honorary Directors:

Allan Curthoys, New York

Communication Director:

Allyn McCray

For Quarterly Submissions:

If you wish to submit material to the Quarterly, please write or call for guidelines.

Please address all communications to:

The Church of Light
2119 Gold Ave SE
Albuquerque, NM 87106-4072

tel: 505 247-1338

fax: 505 814-7318

Editorial

By Christopher Gibson

"When you are inspired by some great purpose, some extraordinary projects, all your thoughts break their bonds; your mind transcends limitations; your consciousness expands in every direction; and you find yourself in a great new and wonderful world. Dormant forces, faculties and talents become alive and you discover yourself to be a greater person by far than you ever dreamed yourself to be." - Patanjali (Indian philosopher, 2nd century BC)

In a horoscope, the Midheaven, or cusp of the 10th house, represents our goals, ambitions and general sense of purposefulness. In a natural chart, the Midheaven and 10th house are associated with the sign of Capricorn, the focus of this issue of the Quarterly. Just as goats in the wild scale the mountaintops, Capricorn individuals express driving ambition, purposefulness and a need to make it to the top.

Purposefulness is a psychological tendency to derive meaning from life's experiences and to possess a sense of intentionality and goal-directed behavior. Feeling good when we think of our past accomplishments and what we hope to do in the future contribute to our sense of well-being and purposefulness.

Capricorn's keywords are "I Use," which also implies living a life of usefulness. That is, living a life on purpose, with the confidence that each and every one of us has been brought forth to fulfill a role in God's Great Evolutionary Plan. For some that goal may be lofty; ending world hunger, non-violence, disease prevention, or human rights. For others that goal may appear to be mundane, but no less important; raising a family, beautifying one's community, volunteering at a polling place or teaching a child to read.

Living with a sense of purposefulness may add to our longevity and improved cognitive function as we age. As we get older, it is important for us to identify personally meaningful activities and engage in goal-directed behaviors. This is especially true of persons facing retirement. To continue on in a life of usefulness, we must discover pleasure in making plans for the future and bringing them into fulfillment. The study of astrology and the application of The Brotherhood of Light Lessons have as their objective the individual realization of one's purpose and place in the Divine Plan. When we realize that purpose, our minds transcend limitations; our consciousness expands in every direction; and we find ourselves in a great, new and wonderful world.



Capricorn Associations

Thought-Series: I Use
 Ruling Planet: Saturn
 Best Quality: Diplomacy
 Worst Quality: Deceit
 Talismanic Gem: Onyx, Sardonyx
 Color: Dark Blue
 Musical Tone: Low G

Capricorn Figures

Accountant, administrator, agriculturalist, ambassador, architect, bookkeeper, boss, bureaucrat, caretaker, chief, city-planner, civil engineer, civil servant, commissioner, commodities broker, diplomat, director, economist, engineer, envoy, executive, farmer, insurance adjuster, insurance salesperson, leader, manager, miner, public servant, security guard, structural engineer, superintendent, supervisor, wholesaler.

Positive Capricorn Traits

Ambitious, accomplished, capable, careful, cautious, circumspect, common-sense, competent, conforming, conservative, conventional, dependable, determined, diplomatic, discreet, dutiful, economical, efficient, exacting, frugal, goal-oriented, habitual, judicious, logical, matter-of-fact, methodical, meticulous, orderly, organized, practical, predictable, prepared, prodigious, prudent, purposeful, reliable, responsible, safety-minded, shrewd, sensible, structured, systematic, thrifty, traditional, utilitarian, vigilant, wary, watchful.

Negative Capricorn Traits

Acquisitive, apprehensive, ascetic, austere, avaricious, burdened, calculating, cheap, cold, covetous, dispiriting, dry, dreary, dull, fearful, formal, gloomy, glum, grasping, grave, greedy, grim, habitual, impoverished, inflexible, lackluster, limiting, materialistic, monotonous, overburdened, plodding, plotting, reserved, restraining, rigid, routine, scheming, self-centered, selfish, serious, severe, sober, solemn, Spartan, standoffish, stern, stoic, strict, tedious, timid, troubled, unbending, uncompromising, unyielding, worried.

(Astrology: Capricorn Continued from page 1)

one of his children would one day overthrow him, Cronos had set about devouring his children as soon as they were born. His consort, Rhea, secreted Zeus away to the Isle of Crete, to be raised by the goat Amalthea, and in his place gave Cronos a stone wrapped in swaddling clothes to swallow. (It is from the goddess Amalthea that we get the cornucopia, or horn of plenty. However, this myth would not explain why Capricorn is pictured by a billy-goat and not a nanny-goat.)

Pan appears to be the more likely origin of Capricorn. In Greek mythology Pan was the god of wilderness, shepherds and their flocks. He had the horns and the hindquarters of a goat. Once, while picnicking on the banks of the Nile, Pan was attacked by the monster Typhon. Pan jumped into the river; his body parts above the surface of the water remained a goat, while those beneath the water took the form of the tail of a fish.

In the Tropical Zodiac, the Sun enters Capricorn on the Winter Solstice and passes through the sign of Capricorn December 22 – January 19. In Sidereal Astrology, the Sun is in Capricorn January 15 to February 15. Taking up less than 30 degrees on the elliptic, the Sun currently passes through the constellation from January 19 to February 15.

Neolithic farmers domesticated goats around 10,000 years ago in order to have continual access to meat, milk, fiber, and skins. Goats are naturally curious and intelligent and can be easily trained; Capricorn individuals are always investigating their environments and accumulating skills. In the wild, goats can be seen at the tops of rocky crags; likewise, Capricorns are high achievers who need to scale the heights. They are always searching for a toehold by which they can gain some advantage over others. Goats are tough, agile, and survive on meager vegetation, and Capricorns are survivors. The key words for Capricorn are I Use, as they are prone to exploiting the resources of their environments for personal gain. Goats are natural foragers that can live on a variety of vegetation. Sometimes feral goats can over-graze an ecosystem leading to erosion and desertification.

Capricorn belongs to the Moveable, or Cardinal Quadruplicity, which also includes Aries, Cancer, and

(Continued on page 5)

(Astrology: Capricorn Continued from page 4)

Libra. In *Astrological Signatures*, C. C. Zain describes the moveable signs as, "active, energetic, and given to change; even as gas generates power and finds it easy to move in various directions little hindered by gravitation. They break the trails that others follow, and start the enterprises that others finish." Capricorns naturally pioneer in the realms of business and industry. Along with Taurus and Virgo, Capricorn is ruled by the element of Earth. The earth signs share the qualities of practicality, pragmatism and industry.

Ruled by the cautious planet Saturn, Capricorns tend to be naturally conservative, and dislike waste of any kind. They make excellent recyclers or hoarders, holding on to

things they believe will be useful someday. They excel in planning, organizing and preparing for the future.

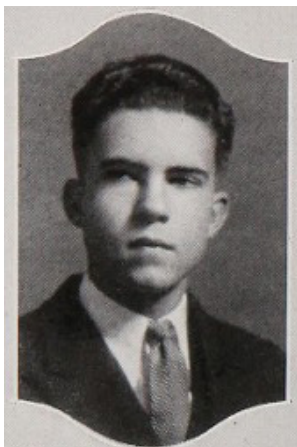
Diplomacy is considered to be the best quality of the sign Capricorn; they know how to say the right thing at the right time for the greatest advantage. Deceit is considered the worst quality of Capricorn; if this sign is afflicted, some Capricorns will do or say anything that will allow them to maintain status or power.

The symbol for Capricorn ♄ can either represent the Sea-goat with a curling fishtail, or the circuitous path the goat takes when scaling the heights.

♄

Dominant Capricorn Personality: Richard M. Nixon

By Christopher Gibson



Richard M. Nixon

Best known as the 37th President of the United States, serving from 1969 to 1974, Richard M. Nixon is a controversial figure among historians. He was born Richard Milhous Nixon, on January 9, 1913 at 9:35 p.m. in Yorba Linda, California. His parents, Hannah Milhous and Frances Anthony Nixon, raised him in a conservative Quaker household that refrained from drinking, dancing and cussing. After the Nixon family ranch failed in

1922, the family moved from Yorba Linda to Whittier, where his father opened a gas station and grocery store. Nixon was raised with four brothers, Harold, Donald, Arthur and Edward. Arthur died in 1925, when Nixon was only twelve years old, and Harold died eight years later in 1933.

Nixon alternately attended both Fullerton and Whittier High Schools, where he played junior varsity football and received formal tutoring in public speaking, becoming a skilled debater. Nixon completed his undergraduate studies at Whittier College and graduated from Duke Univer-

sity School of Law in 1937. After college, Nixon returned to Whittier to set up a law practice. While auditioning for a part in a play at the Whittier Community Theater, Nixon met Thelma Catherine (Pat) Ryan; they married in Riverside, California, on June 21, 1940.

Nixon entered politics in 1946, when he was elected congressman representing California's 12th District. In 1950, He was elected U.S. Senator, and in 1952 he was elected Vice President under Dwight D. Eisenhower. In 1960, Nixon waged an unsuccessful presidential campaign, losing by a narrow margin to John F. Kennedy. In 1962 he lost the race for Governor of California to Pat Brown.

Even with a string of defeats, Nixon, a persevering and goal-oriented Capricorn, never gave up. In 1968, he ran again for president. This was a period of social upheaval that witnessed race riots in major cities, and violent confrontations between police and demonstrators protesting the Vietnam War. The assassination of civil rights leader Martin Luther King Jr. and Presidential candidate Robert Kennedy had the nation reeling from shock. On November 5, 1968, Nixon defeated the Democratic candidate, Vice President Hubert Humphrey, as well as the Independent, segregationist candidate, Alabama Governor George Wallace, to emerge triumphant as newly-elected President of the United States.

(Continued on page 6)

(Continued from page 5)

The Fourth House of land and the environment is the Dominant house in Nixon's chart. During his tenure as president, he announced the formation of the Environmental Protection Agency, presided over the first Earth Day, and supported other initiatives such as the Clean Air Act and the National Environmental Policy Act.

Diplomacy is the best quality of Capricorn, and Nixon's tenure as president was defined by his foreign policy. During his first year in office, Nixon sent word to the Chinese that he wanted closer relations. Nixon's 1972 visit to the People's Republic of China ushered in a new era of Sino-American relations. However, Latin-America did not fare as well under Nixon's regime. When the democratically-elected, Chilean President, Salvador Allende came to power in 1970, Nixon pursued a campaign of CIA-backed covert resistance. This ultimately led to the 1973 coup d'état by General Pinochet that culminated in the assassination of Allende and the disappearance of thousands of his supporters. In other parts of Latin Amer-

ica, Nixon stepped up covert operations against the Castro regime in Cuba. In May of 1972, Nixon engaged in intense negotiations with Leonid Brezhnev. The results of the summit had the two superpowers proclaiming a new era of peaceful coexistence. Nixon felt that the United States should encourage Israel to make peace with its Arab neighbors while at the same time significantly increasing arms deals to the Middle East, especially Israel, Iran and Saudi Arabia. When Egypt and Syria attacked Israel in October, 1973, Nixon initiated an airlift of American arms to Israel. The result was an oil embargo - Arab nations refused to sell crude oil to the US, in retaliation for its support of Israel.

Deceit is the worst quality of Capricorn; and Nixon's downfall was to be his duplicity. Using the FBI, CIA, and the IRS, Nixon and his close aides ordered harassment of political figures and activists. On June 17, 1972 five men were caught breaking into Democratic party headquarters at the Watergate Complex in Washington, D.C. The ensuing scandals and series of revelations made it clear

PLANETS

	Power	%	Harmony
♃	87.74	15.6	1.71
♄	77.47	13.8	28.92
♅	65.41	11.7	-27.07
♆	59.90	10.7	-7.39
♁	50.76	9.0	-3.18
♂	36.87	6.6	-5.55
☉	35.39	6.3	0.56
♃	34.86	6.2	1.43
♀	30.18	5.4	25.90
♃	29.36	5.2	-1.13
♃	29.08	5.2	-7.07
♃	24.37	4.3	11.07
	561.39	100.0	18.20

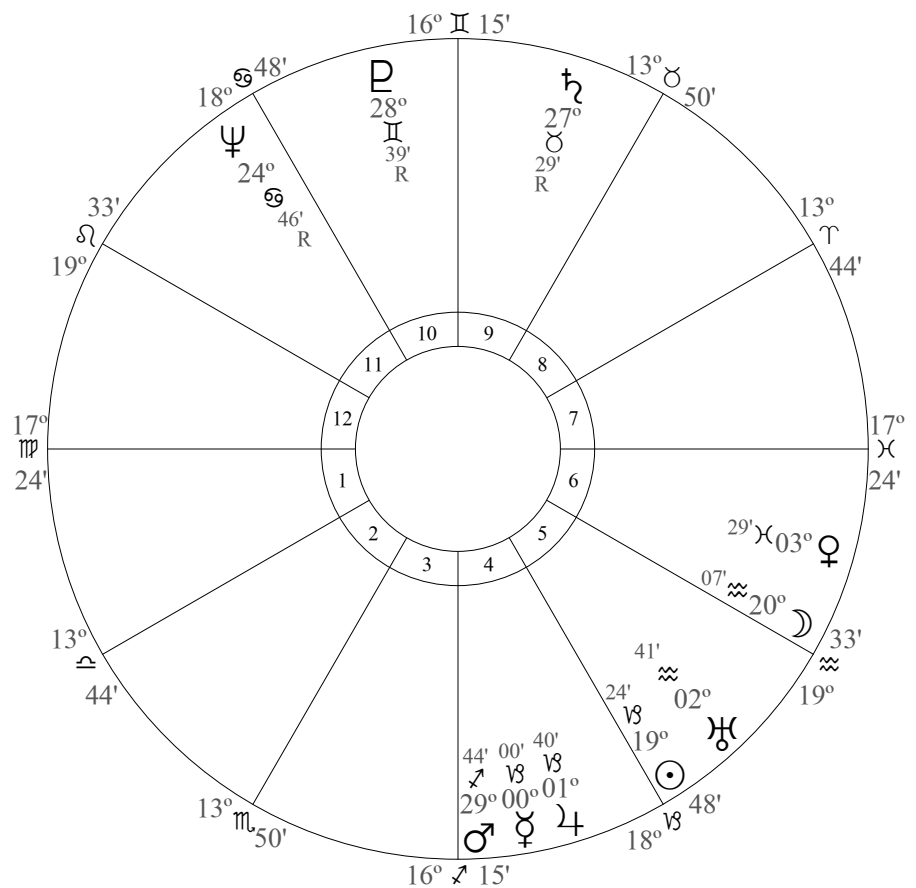
HOUSES

	Power	%	Harmony
4	263.84	30.4	37.70
10	160.04	18.4	-29.39
5	82.18	9.5	0.14
1	80.74	9.3	-4.69
6	70.61	8.1	37.05
9	49.95	5.7	14.38
11	41.26	4.7	-1.53
3	31.33	3.6	-8.62
8	29.95	3.4	-3.69
7	26.64	3.1	5.46
12	17.69	2.0	0.28
2	15.09	1.7	12.95

SIGNS

	Power	%	Harmony
♈	218.02	25.1	31.90
♉	160.04	18.4	-29.39
♊	98.64	11.3	7.07
♈	80.74	9.3	-4.69
♋	69.79	8.0	10.02
♌	56.82	6.5	31.36
♍	49.95	5.7	14.38
♎	41.26	4.7	-1.53
♏	31.33	3.6	-8.62
♐	29.95	3.4	-3.69
♑	17.69	2.0	0.28
♒	15.09	1.7	12.95

(Continued on page 7)



(Continued from page 6)

that Nixon aides had committed crimes in attempts to sabotage the Democrats. The term Watergate has since entered our vocabulary to signify an array of clandestine and illegal activities. After the eruption of the Watergate scandal, Nixon rejected accusations of wrongdoing and vowed to stay in office. During a televised press conference he said, "People have got to know whether or not their President is a crook. Well, I'm not a crook. I've earned everything I've got." Ultimately, with loss of political support and under the threat of impeachment, Nixon was forced to resign his office on August 9, 1974. On September 8, 1974, his successor, Gerald Ford, granted Nixon a full, free, and absolute pardon for his misdeeds while president.

At age 81, Nixon suffered a debilitating stroke on April 18, 1994, and died four days later. In attendance at Nixon's funeral was the current President, Bill Clinton, and former Presidents Ford, Carter, Reagan, and George H. W. Bush.

18

	☉	☽	♃	♄	♅	♆	♇	♈	♉	♊	♋	♌	♍	♎	♏	♐	♑	♒	♓
☉	2.28 2.28		4.08 -3.06			1.92 0.96		7.63 -7.63											8.01 8.01
☽					1.55 -0.77	0.64 -0.96				1.47 1.47	6.14 6.14								0.29 0.00
♃			4.53 5.66	14.73 -3.68	13.34 6.67	1.47 -0.73	1.32 1.32			13.64 -13.64									
♄				3.26 3.26	5.18 9.07			1.21 1.51		5.17 6.46									
♅		4.17 -1.04			10.08 2.52	0.74 -0.55	0.05 0.04			10.90 -13.63									
♆		14.32 7.16		2.79 0.70				1.98 2.96		8.98 -4.49									
♇	4.16 -2.08							2.79 1.40	3.29 1.64	1.83 0.92									
♈								2.08 -2.08			3.57 -3.57								4.72 -4.72
♉								4.38 0.00											
♊	0.86 0.00						8.32 -4.16												
♋	3.97 0.00		7.06 0.00			6.19 3.10													8.84 -8.84
♌																			

Timeline

Year	Event	Aspect
1925	Brother Arthur dies	ASC ☐ ♀r, ASC ☐ ♂r
1933	Brother Harold dies	MC ☐ ♃p, ASC ☐ ♃p
1937	Graduates from Duke University School of Law.	♀ ☐ ♃r, MC ♃r
1946	Elected to House of Representatives	MC ☐ ☉r, ♃ ☐ ☉p
1950	Elected to U. S. Senate	MC ☐ ♃r, ☉ ☐ ♃r
1953 to 1961	Served as Vice President under Dwight D. Eisenhower	☉ * ♃r, MC * ♃r
1960	Narrowly loses presidential election to John F. Kennedy	MC ☐ ♃p
1962	Loses California Gubernatorial race to Pat Brown	MC ☐ ♂p
1972	Initiates diplomatic relations with the People's Republic of China	☉ * ☉r, ♃ * ♃r
1972	Re-elected President with landslide victory	☉ * ☉r, MC * MCr
1974, August 9	Facing Impeachment, resigns Presidency	☉ ♃p, MC ♃r
1994, April 18	suffers a debilitating stroke, dies four days later	ASC ☐ ♃r, ♂ ♃r

(Continued from page 1)

offering me spiritual advancement if I use the experience as a means to those ends. Hold me and mine in the Light.

Capricorn expresses in the spiritual world as absolute justice; in the intellectual world as attraction and repulsion; in the physical world as relative justice which is fallible and limited, and comes from humanity. "Capricorn is receptive, and is also a reflective zodiacal sign which pertains to earthly endeavor. These qualities which express as receiving and not giving, of utilizing all to its own advantage, are well typified by the sense of hearing. It is often quoted that where speech is silver, silence is gold; and Arcanum VIII pictures this stable attitude of listening." (*Sacred Tarot*)

Capricorn is an exercise in opposites. On one hand, the end of the solar year can be dark and dreary here in New Mexico, and the spiritual message sometimes feels as dark as the days. Yet then we come to the reality of the absolute joy one feels as the celebration of the Winter represents justice in its absolute form.

The text in [Spiritual Astrology](#) mostly discusses the story of Esau and Jacob, and how Jacob fooled his father Isaac, in order to usurp the birthright of the eldest son. This story has always seemed incomprehensible to me, probably because we don't have all those issues about primogeniture these days. In those times, that was absolute justice, and it is true that in any time we need the energy of justice and equilibrium in order to function in the world.

Mostly, our sense of justice in the physical world is terribly flawed. I cannot imagine that anyone really feels adequate to make judgments. I honor those people who choose or are chosen for the task of judging; just as I am often disgusted by how easily some become corrupted by the power they have. But lest we forget, there is a common adage that states, "To err is human, to forgive is divine." I believe this is the real message hidden in this search for justice.

It is personal, this work to let go of judgment. Relationships work best when we are able to be with others without judging any part of who they are or what they

do, along with we ourselves being able to refrain from self-judgment. Relationships full of judgment are doomed to failure. To me, the sense of hearing means that I listen with my heart, my intuition, as well as my physical sense of hearing. It means that I cease the inner dialogue which gets in my way of really listening.

None of us have reached the state of perfection as far as I know. We are human; we are fallible; we are all on this amazing and wonderful journey of spirit. Forgiveness without judgment will carry us farther on our path of spirituality than the journey of "I am right." If we experience injustice, can we take this experience and utilize it without judgment? Can we take every part of this and make the best of it that we can? That is making good use of our experiences for spiritual ends.

Our search for justice must begin internally with our desire to eradicate our own injustice toward others. It is our job to rid ourselves of selfish interests as much as we possibly can. We must try to

make this personal, because it always begins with self. Service to others must be an intricate part of our relationship to Spirit. To think well and do nothing is the highest form of stagnation and hypocrisy. To act with good intention for the good of all, no matter how small the action, is stepping forward for our life wave. No one can tell another what action is right action, but there must be action!

"Remember then, children of earth, that to be victorious over ourselves and dominate obstacles is but a part of the human task. To accomplish it entirely you must establish equilibrium between the forces that you have brought into play. All action produces reaction. The will should foresee the shock of opposite forces in order to temper or annul them. If the balance appears in the prophetic signs of your horoscope, it signifies that the future is balanced between good and evil, and warns that an unbalanced mind is like an abortive sun."

From a sermon presented by Rev. Meg Dissinger December 2006, at The Church of Light, Albuquerque, NM.

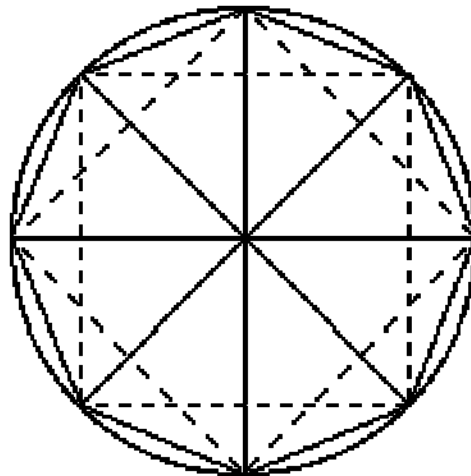


Numbers as Archetypes: The Octad—Same Difference

By Szenza

Leaving the pristine, ethereal realm of the Heptad, we re-enter the material world through the gateway of the Octad. Excepting the Monad, which provides the blueprint for all number, the Octad is the only number within the Decad that allows for a cube ($2 \times 2 \times 2 = 8$), indicating its link with three-dimensionality and the physical world. Again, in stark contrast to the “virgin” properties of the Heptad, the Octad is instead perhaps “promiscuous”, in the words of Michael Schneider, author of *A Beginner’s Guide to Constructing the Universe* (1994, p. 268), in that it is divisible by more terms than any other within the Decad (i.e., 4, 2, and 1). The ancients called it “evenly even”, in that all of its divisors are even, all the way down to the Monad. This is in contrast, for example, to the Hexad, which is considered “oddly even”, because its divisors are 3, 2, and 1.

The Octad occupies a unique position within the Decad, in that it demonstrates two symbolisms concurrently. The main theme of the Octad is *periodic renewal*. For this reason, depending on one’s perspective, it can be seen either as the culmination of one process, or the beginning of a new one. Hence, Western musical scales are based on seven tones, but it is only with the return to the eighth, or octave, that they demonstrate completion. Likewise, some elements in the Pe-

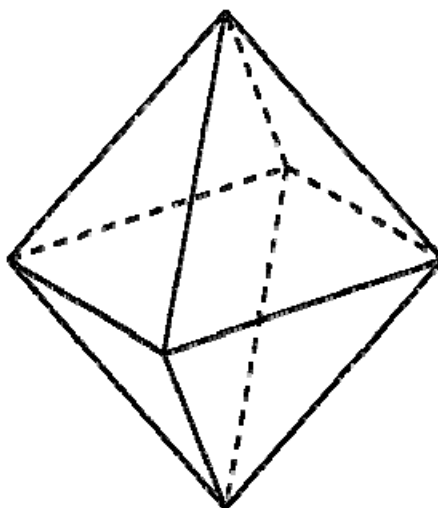


riodic Table of Elements demonstrate periodicity, becoming most stable when their outer energy levels bear exactly eight electrons. We ourselves have fashioned our calendars on a similar principle, the standard week being comprised of seven days, and returning to the first day of a new week on the eighth day of the series.

Even the shape of the number itself (8), if studied carefully, reveals its symbolism. It is essentially two circles touching at a mid-point. A circle is an obvious symbol of a cycle. Hence, in the Octad, we see evidence of two cycles— one just finishing, the other just beginning. By depicting the same symbol horizontally instead of vertically, we arrive at the modern glyph for infinity (∞), a constant and eternal movement between the polar boundaries of any form of manifestation.

The paradoxical quip “same difference” is well-suited to describe the Octad. Consider a person completing a high school degree: in one sense, that individual is considered to have mastered certain material in order to be awarded that degree. And yet, once the party is thrown, he finds himself a beginner all over again upon entering the halls of a university. Our hero is, at once, accomplished and novice.

The Octad works in much the same way, in that it depicts the



The Octad works in much the same way, in that it depicts the

(Continued on page 12)

Tarot Correspondence—The Balance



Divination

“Expresses in the spiritual world, absolute justice.

In the intellectual world, attraction and repulsion.

In the physical world, relative justice, fallible and limited, which comes from man.”

Admonition

“Remember, then, son of earth, that to be victorious over thyself and dominate obstacles is but a part of the human task. To accomplish it entirely thou must establish equilibrium between the forces that thou hast brought into play. All action produces reaction. The will should foresee the shock of opposite forces in order to temper or annul them. If the Balance should appear in the prophetic signs of thy horoscope, it signifies that the future is balanced between good and evil, and warns that an unbalanced mind is like an abortive sun.”

Astrology

Perfect equilibrium of forces produces crystallization. A solid is the result of an equilibrium established between at least eight forces. First, two forces converge. And about this point of equilibrium two forces meet from above and below, two from right and left, and two from behind and in front; eight forces in all, well represented by a cube with its six faces and a center. Verily, matter is nothing but spirit in a state of equilibrium. The most earthy sign of the zodiac, the sign which the sun enters when life's forces are lowest and the waters and vapors of earth crystallize into ice and snow, is Capricorn. Capricorn well expresses that equilibrium which results in crystallization, and thus corresponds to Arcanum VIII.

Excerpts from *The Sacred Tarot* by C. C. Zain

Tarot Card Example Spread—Lucky Seven

Tarot Spread Interpretation

The Querent asked, “What surrounds the purchase of the home on Aloysia?”

Card Spread

The Past— Arcanum VI—The Two Paths “Temptation.”

The Present— Nine of Coins “money spent on associates; its inner interpretation is REASON.”

The Future — Ten of Swords (reversed) “sudden loss of employment; its inner interpretation is PRACTICALITY.”

The Ability to Control— Three of Coins “a marriage for money; its inner interpretation is EXPIATION.”

The Environment — Arcanum XIV—The Alchemist (reversed) “Regeneration or Temperance.”

The Opposition— Arcanum XVIII—The Moon (reversed) “Deception, False Friends.”

The Outcome—Horseman of Swords (reversed) “...thoughts of enmity, strife or sickness...reversed, they are plans and desires for his ruin.”



Summary

The Two Paths representing the past of the matter indicates that the Querent has been plagued with indecision and is currently trying to decide between two or more houses.

The Nine of Coins in the present might indicate that the purchase price is right and that the home might work well for socializing or entertaining friends.

The future of the question is pictured by the Ten of Swords reversed and shows that there might be competition or that the house might be off the market before the Querent is ready to make a decision.

The ability to control the matter is represented by the Three of Coins, read as a marriage for money. The buyers might have to make a deposit to secure a purchase agreement.

The environment is signified by Arcanum XIV—The Alchemist (reversed) “Regeneration or Temperance.” The property could feel very healing or like a right fit.

The opposition is Arcanum XVIII—The Moon (reversed) “Deception, False Friends.” This could indicate the misgivings the Querent had about a low-income housing development just one block away, or possibly it indicates that not all the facts are available from which to make a clear decision.

The Horseman of Swords (reversed) as the outcome does not bode well for a successful conclusion. If the Querent enters into contract on this property she might later have regrets or remorse, perhaps due to finding something even more perfect.

(Continued from page 9)

movement from one level of complexity to the next, or from one order of achievement to the next. It demonstrates sameness, in that it is a renewal of the original theme. Yet that renewal is different, in that it operates at a high level of accomplishment. Like a couple having a baby, that child is at once a part of them, yet at the same time a completely new, unique individual. The child bears infinite possibilities, capable of anything in such a pure, beginning state. Likewise, we can see the Octad functioning in our lives wherever there is a repeated cycle, a folding back of one end upon a new beginning. And just as with a new baby, the possibilities for us too are endless.

References:

Iamblichus. (1988). *The Theology of Arithmetic*. (Robin Waterfield, Trans.). Grand Rapids, MI: Phanes Press.

Schneider, M. (1994). *A Beginner's Guide to Constructing the Universe*. New York, NY: Harper Perennial.

Zain, C.C. (1994). *The Sacred Tarot: The Art of Card Reading and the Underlying Spiritual Science*. Los Angeles, CA: The Church of Light.

∞

Advertise in the 2013 Convention Program

Here's an opportunity to make your service, talent, or business product known to other members. At the same time you help support the cost of hosting the convention.

Space is also available for spiritual messages and/or special messages to friends & family. Use your imagination for a message to the universe at large — or whatever!

The space and rate breakdown is as follows:

1. \$50 you get a Full Page (8 ½" tall x 7" wide).
2. \$30 you get 1/2 sheet, which is 4 ¼" tall x 7" wide (or 8 ½" tall x 3 ½" wide).
3. \$15 you can have 1/4 page or 2" tall x 7" wide (or 4 ¼" tall x 3 ½" wide).

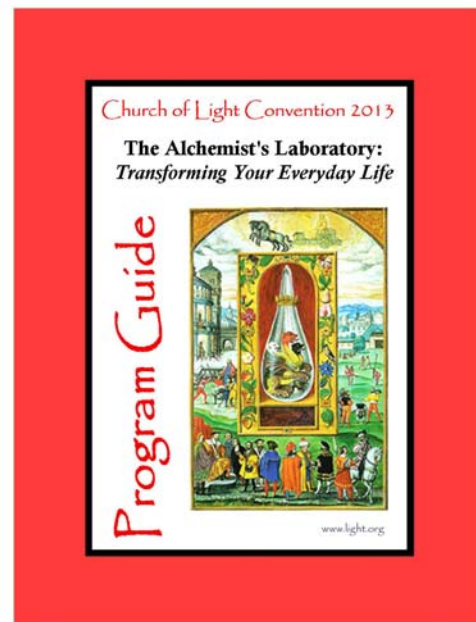
**To participate in this opportunity,
please mail or email the following:**

1. Advertising material, and/or personal message
2. Ad space requirement
3. Your contact information

Please send us your Ad copy to:
The Church of Light, 2119 Gold Avenue SE
Albuquerque, NM 87106
or
churchoflight@light.org.

All ads and messages will be submitted to you by email as a PDF file for your final approval before they are printed.

For questions and/or clarifications, call 1(800) 500 0453 or email at churchoflight@light.org.



3 easy ways to donate for your Ad:

1. Send a Check or Money Order in the mail with your Convention Ad
2. Call Headquarters and give your Credit Card information over the phone
3. Go Online and make a General Fund Donation and write **Convention Ad** in the comment box.

Convention 2013—The Alchemist's Laboratory: Transforming Your Everyday Life



Three-headed Mercurial Dragon

The 2013 Church of Light Convention, "The Alchemist's Laboratory: Transforming Your Everyday Life" will be held June 21-23, 2013, in Albuquerque, New Mexico. This fun-filled and informative convention includes preconference tours and two full days of speakers focusing on the captivating topic of Alchemy. You will discover how you can unlock its ancient secrets and apply them in transforming your life. The 2013 Church of Light Convention is also a great opportunity to meet like-minded people who share your interest in astrology, alchemy, and tarot.

Pre-conference Tours

For those of you who are planning to make New Mexico your vacation destination, we have planned two exciting day trips. On Wednesday, June 19, 2013, we will be taking a scenic train ride from Albuquerque to Santa Fe on the Rail Runner. Santa Fe bears the distinction of being the oldest capital city in the United States. When it was founded in 1608, Santa Fe was originally called La Villa Real de la Santa Fé de San Francisco de Asís (The Royal Town of the Holy Faith of St. Francis of Assisi).

There are more than five museums and scores of art galleries all within walking distance of the downtown Santa Fe Plaza. The Palace of the Governors, built in 1610 atop the ruins of an Indian pueblo, is the oldest continuously occupied public building in the U. S. and houses history and art exhibits. The New Mexico History Museum is the newest museum in Santa Fe and has wonderful interactive exhibits on the state's his-



Rail Runner to Santa Fe

tory. Built in 1917, The New Mexico Museum of Art displays changing exhibitions of the state's remarkable collection of regional art. The Governor's Gallery, displayed on three levels of the State Capitol building, features the work of prominent New Mexican artists. The Museum of Contemporary Native Arts (MoCNA) is the country's only museum for exhibiting, collecting and interpreting the most progressive work of contemporary native artists. The Georgia O'Keeffe Museum is dedicated to Georgia O'Keeffe (1887-1986), one of the most significant artists of the 20th century, and her contemporaries.

Eating out is a major pastime in Santa Fe, which features dozens of restaurants with high-profile chefs as well as more affordable fare. We'll break up the day's journey with a delicious lunch within walking distance of the plaza. After lunch there will be time to break into groups for shopping or additional museum visits. At end of day, we will return to Albuquerque on the Rail Runner. The fees for this excursion will be paid individually. For budgeting purposes, a round-trip day pass on the train is approximately \$10, Museum admissions average about \$10 per site, and lunch should be less than \$20.

Thursday, June 20, 2013, is not for the faint of heart, as we will travel to the top of Sandia Crest aboard the Sandia Peak Tramway. 2.7 miles long, this is the world's third longest single span tramway. Over this distance the gondolas ascend more than 4,000 feet. The average speed of the tram car



Sandia Tram

is 12 mph, and the length of the ride, called a flight, is approximately 15 minutes. The Sandia Crest towers above Albuquerque at an elevation of 10,678 feet. The mountain is home to the Sandia Mountain Wilderness Area, part of the Cibola National Forest. As a result of the great change in elevation from the base of the mountain to the crest, as well as changes in temperature and amount of precipitation, we will travel through four different eco-zones. At the top of the mountain, we will hike through

(Continued on page 14)

(Continued from page 13)

Alpine forests and meadows, enjoying numerous varieties of native wildflowers that bloom at this time of year. At the top of the crest is High Finance Restaurant, which will provide lunch for our outing. The group-rate fee for round-trip passage on the tram and lunch is \$38. This will be payable in advance, as this trip requires reservations. We hope you will join us for these two exciting day trips.

Pre-conference Intensive

On Friday, June 21, a pre-conference intensive titled The



Christopher Gibson

Alchemy of Progressions, facilitated by professional astrologer Christopher Gibson, will be offered for \$45 as a fundraiser for The Church of Light. In this three-hour workshop, from 9:30 a.m.—12:30 p.m., participants will learn how to read a progression report in order to determine upcoming trends in one's life. Each registrant will be taught how to look at his or her chart from the perspective of what patterns in consciousness might be stimu-

lated under particular progressed aspects. Special attention will be placed on harmonizing discordant planets and aspects using affirmations, visualizations, environmental factors and behavioral changes.

Initiations

Church of Light Initiations are a highly anticipated feature of our conventions. Initiations are when members are formally inducted into the organization, as well as marking grade and degree changes. This inspiring ritual will be officiated by Hermetician members of The Order of the Sphinx on Friday evening, June 21. Please let us know if you would like to participate in the Ritual of Initiation by checking the appropriate box in the registration form. If you have any questions about your eligibility or grade level, feel free to contact us at headquarters.

Convention

We have an exciting group of speakers and topics in the planning stages for 2013, some of whom will be presenting for the first time at a Church of Light Convention. In each Quarterly between now and convention time, we will be

featuring a few of our speakers and proposed presentations:

Linda Oglesby - The Planets as Symbolized in the Metals of Alchemy

Linda joined The Church of Light in 2010 and attended her first convention in 2011. She was so excited by the teachings and camaraderie that she chose to return as a presenter for the 2013 Convention. Linda has a diverse resume; she has worked as a medical technician in the Cook County Hospital in Chicago Illinois, taught English and Math through the Los Angeles Unified School District and San Diego Community College District, and worked for 23 years as a revenue agent for the Treasury Department. Linda has a background in Theosophy and is an ordained minister of the Universal Foundation for Better Living, a licensed teacher for the Johnnie Colemon Academy, the teaching arm of Christ Universal Temple located in Chicago, where she has served on of the Board of Directors as treasurer. For the last year Linda has been studying chart erection in preparation for her exams with the American Federation of Astrologers.



Linda Oglesby

Linda's presentation will lead participants through the symbolism of alchemical metals as they correspond to the planets of astrology.

Jeffrey L. Rhynard - Alchemy in Science and Spirituality

Jeff works in nursing and has been a lifelong student of natural sciences, having explored many facets of esoterica, self-help, new age philosophy, and religions in search of that which is hidden. While in junior high, he aspired to become a parapsychologist, only to be redirected by his school counselor. He is a second grade, 6th degree member of the Church



Jeff Rhynard

(Continued on page 15)

(Continued from page 14)

of Light, which he joined in 2004. Jeff's presentation will reveal how spirituality was, and is, an essential part in all phases of science growth, from old, in which spirituality remains hidden, to accepted science studies in which an unseen force had to be acknowledged, to fringe science experiments in which spirituality is purposefully used. Jeff has a small Van de Graaff generator on hand to illustrate the power of changing/moving unseen forces; this is certain to be a hair raising experience for those members of the audience willing to participate in a hands on demonstration.



Allyn McCray

Allyn McCray - Alchemy: From A to Y

Allyn McCray's interest in Egyptian Tarot led her to join the Church of Light in 2002. She now serves the Church as Minister, Hermetician, Certified Teacher, Mentor, Section Advisor to Paws as a member of The Order of the Sphinx, WebTeam Coordinator, and Communications Director. She occasionally contributes articles to The Quarterly and is active on the Curriculum Committee and the Convention Committee.

Allyn's presentation asks the questions: What is Alchemy? What are the Universal Principles of Alchemy? And why should we study Alchemy? The answers will be sought in the legends of the Emerald Tablet, Alchemy and its traceable history from the Egyptians, to the Arabs, to the Greeks, to the Europeans, and in the stories of famous alchemists.

Costume and Dance Party

Stellarians know how to have a good time, and no conference is complete without a party. Saturday night's Awards Banquet will be followed by a Hogwarts Reunion Costume Ball. This will be a night to remember. For 2013 we are negotiating with Clan Tynker, a magical family circus, for an evening of entertainment.



2011 Awards



Best Western Rio Grande Inn

Best Western Rio Grande Inn

This year's conference will be returning to the Best Western Rio Grande Inn located in Albuquerque's historic Old Town district, at 1015 Rio Grande NW. This classic Southwestern inn offers warm hospitality, cool drinks, and excellent regional cuisine. It is within walking distance to unique shopping, dining, galleries, and museums. A complementary shuttle is available to transport you to and from the Albuquerque Sunport, Old Town Plaza, the Indian Pueblo Cultural Center, and the Bio Park. The Church of Light has secured a special group rate for our members and friends who plan to attend our convention June 21-23, 2013. The Best Western Rio Grande Inn has graciously offered our attendees the same discounted room rate of \$89 plus tax per night that was offered in 2011. Our special group rate is also valid three days before and two days after our event for those who would like an extended stay in New Mexico. To make your hotel reservations, call 1.800.959.4726 or, locally, 505.843.9500. When making your reservation, please identify yourself as a member of The Church of Light in order to receive our group discount. The Best Western Rio Grande Inn provides complimentary shuttle service to and from the Albuquerque International Airport from 7:00am to 10:00pm daily.

Conference Registration

The incredibly low rate of \$175 includes both days of workshops, lunch buffet for Saturday and Sunday, the Friday night reception, and the Awards Banquet. Single day attendance is available for \$110. Additional guests who are not attending the convention can join you at the Awards Banquet for \$40. Friday's preconference workshop on The Alchemy of Progressions is offered for \$45 as a fundraiser for The Church of Light.

For detailed updates on our convention plans, please visit the 2013 Convention page on our website: www.light.org

Membership Room



The Weekly Beacon

Would you like to receive weekly up-to-date information about Church of Light activities, events and special offers via email?

If so, either go online to www.light.org and register as a member and choose “yes to be notified” or send us an email to churchoflight@light.org with your request.

We’ll be happy to add you to the Weekly Beacon contact list.

Follow us on Twitter and Facebook ...

Ali McCray, CofL Communication Director, has created a Facebook page and Twitter feed for the Church of Light and its members. If you’re interested, make friends with the Church Of Light and add your comments or subscribe.

For more information contact: ali@light.org

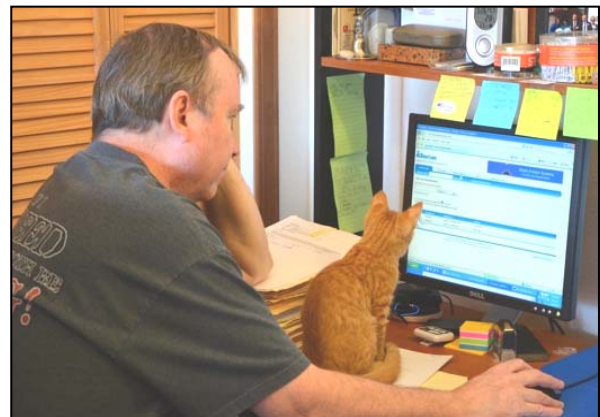
Sponsorship Program

The Church of Light offers a Sponsorship Program for financially disadvantaged members. Sponsors agree to financially assist a member in their C of L studies by donating their membership fee, lessons, and the exam processing fee as the student studies the lessons and passes exams.

To remain in the sponsorship program, an enrolled member must pass an exam once every six months with a grade of 75% or better. The next course is mailed only upon completion of the previous course.

There are always more members wishing to be sponsored than we have sponsors.

If you are interested in anonymously sponsoring a member in need, please contact our Membership Minister, Rev. Patrick Ramsey, at drpat@prodigy.net or call the office Monday, Tuesday or Thursday from 9:30 a.m. –5:30 p.m. Mountain Time at 505-247-1338.



Patrick Ramsey (and assistant Tigger)

Membership Room

Members Seeking Contact in Their Area

The following Church of Light member is seeking to make contact with like-minded students near Paradise, CA

Fredmichael: fmclaw@att.net

Volunteer Opportunities—The Order of the Sphinx



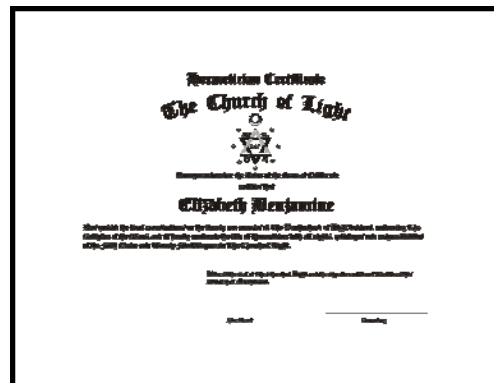
The Order of the Sphinx is an organization of Hermeticians continuing their service to the **Church of Light**.

Currently **The Order of the Sphinx** is recruiting Certified Teachers and Hermeticians to participate as mentors in the Mentorship Program. Duties involve communicating with students by email or telephone who are currently passing their Brotherhood of Light Lessons. If you are interested in volunteering your time as a mentor contact:

peter@light.org
or scribe.sphinx@light.org

Welcome New Hermetician

David Duran



Follow us on Twitter and Facebook ...

Ali McCray, CofL Communication Director, has created a Facebook page and Twitter feed for the Church of Light and its' members. If you're interested, make friends with the Church Of Light and add your comments or subscribe.

For more information contact: ali@light.org

Membership Room

Fort Worth, Texas, Activities



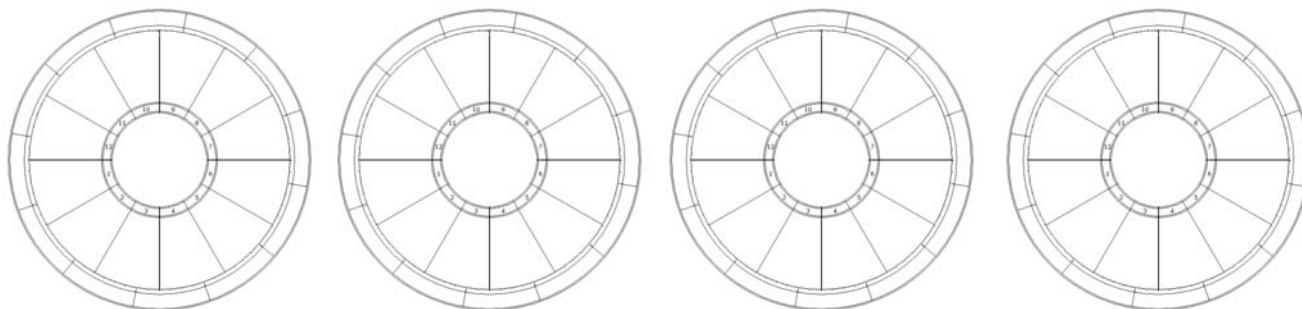
The Fort Worth Center offers Brotherhood of Light classes on the first and second Tuesdays of the month from 7-9 p.m. Religious services are held on the third Sunday of the month at 11 a.m. A schedule for the upcoming year is available on their website at:

owlswebnest.com.

All classes and services are held at:

Owl's Clover Bookstore
3037 James Avenue
Fort Worth, Texas
817-921-5809

Upcoming Classes: In-Depth Astrological Delineation



Five Consecutive Thursdays February 21—March 21, 2013 6:30—8:30 p.m. MST

Learn to refine your techniques for astrological chart interpretation. Every week for five weeks we will offer in-depth analysis of the natal chart, astrodynes, and progressions of a historical figure or someone currently in the news. Your instructor, Christopher Gibson, will walk you through the steps that would be followed in a professional astrological consultation. This is an opportunity to gain greater interpretative skills and to build vocabulary associated with the planets, signs, houses, and aspects in a chart. Special attention will be given to how the structure of the natal chart impacts the way we interpret progressed aspects.

This class is for the astrological student who is already familiar with the basic keywords for the planets, signs, houses, and aspects, and who has a rudimentary knowledge of how progressions work.

For students outside of Albuquerque, the class will be offered live, online, and archived for later viewing.

There is a suggested donation of \$12 per class or \$50 for the five-week series.

Instructor: Christopher Gibson

Membership Room

Sunday Services and Roundtable Discussions



Paul Brewer



Vicki Brewer



Meg Dissinger



Yvette Fortin



Christopher Gibson

Participate with us live at Church of Light Headquarters in Albuquerque, New Mexico or online at: www.light.org

Astrological Meditations

A discussion group facilitated by Veiga O'Sickey is held on the First Sunday of the month at 11 a.m. commencing in February



Allyn McCray

Finding Our Light by Accepting Our Shadow

Join Yvette Fortin on the Second Sunday of the month at 11 a.m. for an overview of Hermetic studies



Veiga O'Sickey

Religious Services

Join our ministerial team consisting of Paul Brewer, Vicki Brewer, Meg Dissinger, Christopher Gibson, Allyn McCray and Radine Ramsey on the Third Sunday of the month at 11 a.m. for our monthly religious service



Radine Ramsey

Calendar Third Sunday Services—2013

Date	Event	Presented by
January 20, 2013	Aquarius Service	Veiga O'Sickey & Christopher Gibson
February 17, 2013	Pisces Service	Pat Ramsey, Paul Brewer & Allyn McCray
March 17, 2013	Aries-Vernal Equinox Service	Christopher Gibson & Meg Dissinger
April 21, 2013	Taurus Service	Paul Brewer & Allyn McCray
May 19, 2013	Gemini Service	Veiga O'Sickey & Christopher Gibson
June 23, 2013	Cancer Service-Summer Solstice	To Be Announced

THE CHURCH OF LIGHT

2119 Gold Avenue SE
Albuquerque, NM 87106-4072

Non Profit
Organization
US Postage Paid
Albuquerque, NM
Permit No. 1322

RETURN SERVICE REQUESTED



Building A Better World With A Better Vision! The Church of Light Vision For the 21st Century

OUR MISSION:

To promote Universal Welfare and the exaltation of humankind through the teaching and practices of the Religion of the Stars as outlined in the writings of C.C. Zain.

GUIDING PRINCIPLES:

A loving Cosmic Intelligence, of which we are all a part, whose infinite goodness guides us through undeviating natural law.

A Divine Plan manifests through progressive evolution in which each soul has a unique and important role.

A soul is completely moral when to the maximum extent of its abilities it adheres to the universal moral code: Contribute Your Utmost to Universal Welfare.

The realization of the soul's Mission and the attainment of Self-Conscious Immortality is the goal toward which each soul moves.

Love is the way to life. Unselfish Love alone makes immortality possible.

Through the proper exercise of one's mentality using Directed Thinking and Induced Emotion, it is possible to control one's own life and destiny, both here and hereafter.

Astrology is the Golden Key that unlocks the door to understanding the Soul's true character and potential.

The safe development of extrasensory perception (Extension of Consciousness) is the best tool for realizing

each individual's mission in the Divine Plan and for verifying the survival of the soul after death of the physical body.

Religion is the sister of Science, and it evolves by incorporating new information as it is discovered and verified.

OUR VISION FOR THE 21ST CENTURY:

We are a powerful force for good and for spiritual enlightenment and expand the reach and experience of our members because:

We provide reliable and verifiable information regarding the nature of the soul and its relationship to Deity and other life forms;

We seek out reliable and verifiable information regarding life on higher planes of existence, especially in regard to the transition we call death and the nature of the next life;

We develop increasingly advanced tools and training in astrology, extrasensory perception, directed thinking and induced emotion toward the end of maximizing each person's happiness, usefulness and spirituality;

We promote the importance of the four essential freedoms: Freedom from Want, Freedom from Fear, Freedom of Expression and Freedom of Religion;

We build a sense of community and spiritual purpose which uplifts and inspires our members to Contribute Their Utmost To Universal Welfare.